



Part Number : [03092041](#)

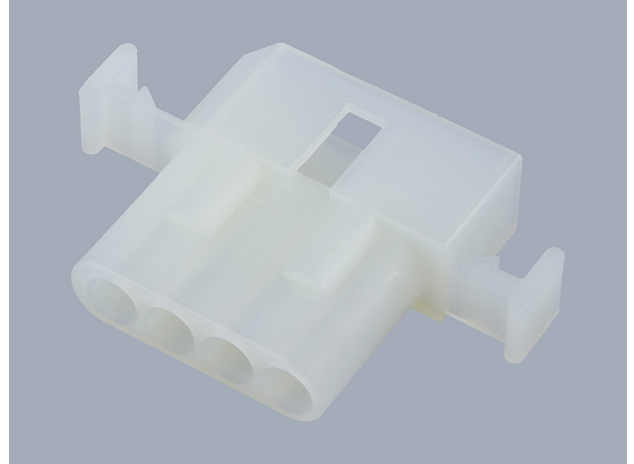
Product Description : 2.36mm Diameter Standard .093" Pin and Socket Plug Housing, 4 Circuits, Single Row

Series Number : 1490

Status : Active

Product Category : Connector Housings

Engineering Number : 1490-P



---

## Documents & Resources

### Drawings

[Drawing 003092041\\_sd.pdf](#)

[Packaging Design Drawing PK-1490-001-001.pdf](#)

### 3D Models and Design Files

[3D Model 003092041\\_stp.zip](#)

[3D Model PDF 003092041.pdf](#)

### Specifications

[Product Specification PS-1490-002-001.pdf](#)

[Product Specification PS-1490-001-001.pdf](#)

[Product Specification PS-02-09-001.pdf](#)

[Product Specification PS-43660-9999-001.pdf](#)

[Product Specification PS-42477-001.pdf](#)

---

## Product Environment Compliance

### Compliance

GADSL/IMDS	Not Relevant
China RoHS	
EU ELV	Not Relevant
Low-Halogen Status	Low-Halogen per IEC 61249-2-21
REACH SVHC	Not Contained per D(2022)9120-DC (17 Jan 2023)
EU RoHS	Compliant per EU 2015/863

## Multiple Part Product Compliance Statements

- Eu RoHS
- REACH SVHC
- Low-Halogen

## Multiple Part Industry Compliance Documents

- IPC 1752A Class C
- IPC 1752A Class D
- Molex Product Compliance Declaration
- IEC-62474
- chemSHERPA (xml)

## EU RoHS Certificate of Compliance

---

### Part Details

#### General

Status	Active
Category	Connector Housings
Series	1490
Description	2.36mm Diameter Standard .093" Pin and Socket Plug Housing, 4 Circuits, Single Row
Application	Power, Wire-to-Wire
Comments	14.0A max. can be achieved when housing is used with 42477 or 42478 terminals
Product Family	Standard .093" Pin and Socket Connectors
Product Name	Standard .093"
UPC	800753618862

#### Agency

CSA	LR19980
UL	E29179

#### Physical

Circuits Detail	(1 x 4)
Circuits (maximum)	4
Color - Resin	Natural
Flammability	94V-2

Gender	Plug
Glow-Wire Capable	No
Material - Resin	Nylon
Net Weight	2.360/g
Number of Rows	1
Packaging Type	Bag
Panel Mount	Yes
Pitch - Mating Interface	5.03mm
Pitch - Termination Interface	5.03mm
Stackable	No
Temperature Range - Operating	-40° to +105°C

---

## Mates With / Use With

### Mates with Part(s)

Description	Part Number
2.36mm Diameter Standard .093" Pin and Socket Receptacle Housing, 4 Circuits, Single Row, Natural	<u>0003091042</u>

### Use with Part(s)

Description	Part Number
Standard .093" Pin and Socket Female Crimp Terminals	<u>1189</u>
Standard .093" Pin and Socket Male Crimp Terminals	<u>1190</u>
Standard .093" Pin and Socket Male Crimp Terminals	<u>1380</u>
Standard .093" Pin and Socket Female Crimp Terminals	<u>1381</u>
Standard .093" Pin and Socket Male Crimp Terminal	<u>1434</u>
Standard .093" Pin and Socket Male Crimp Grounding Terminals	<u>1973</u>
Standard .093" Pin and Socket Female Crimp Terminal	<u>4550</u>